

GRUA TORRE TOWER CRANE

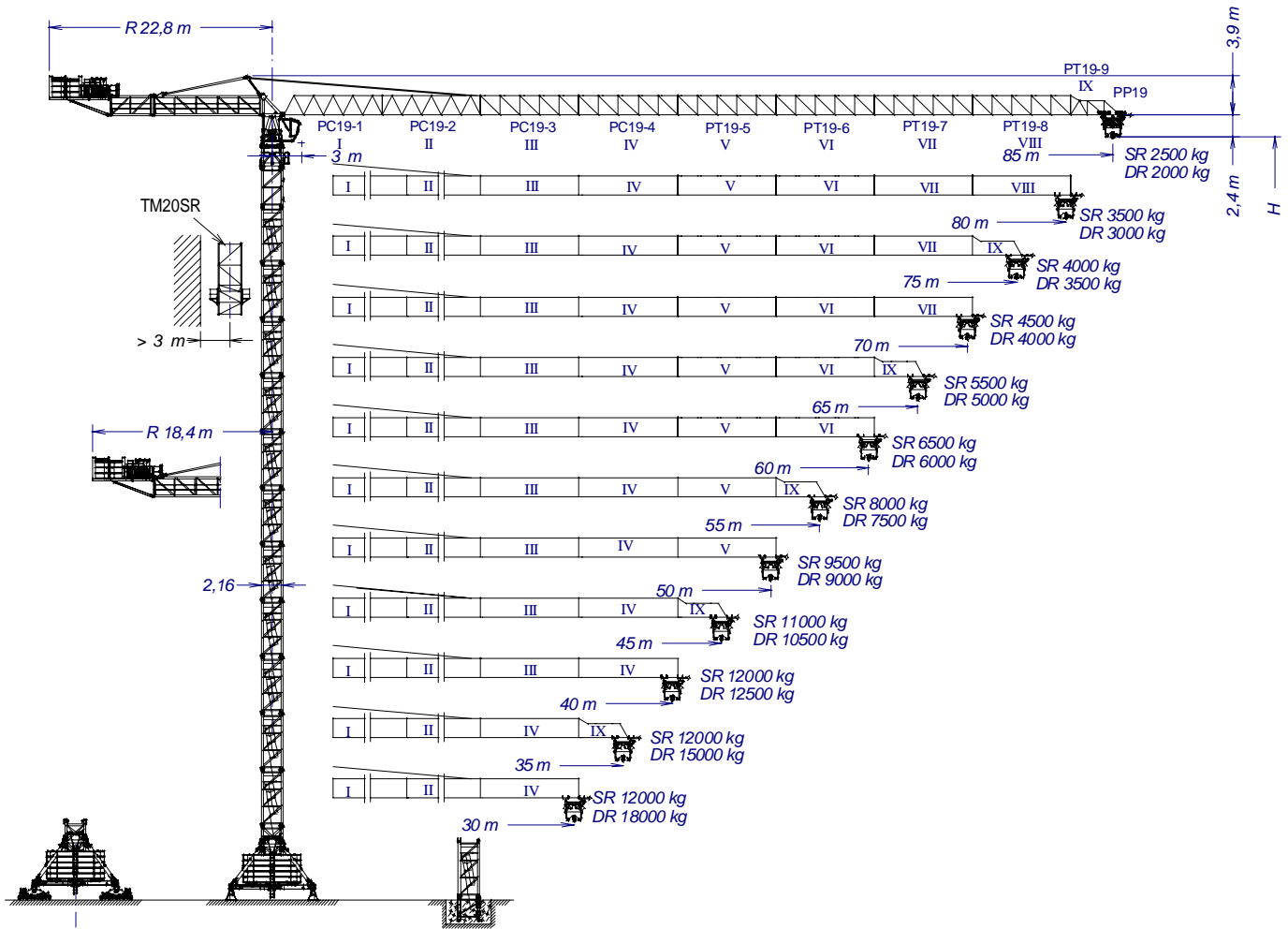
J420



UNE 58-101-92
FEM 1001

SISTEMA DE CALIDAD CERTIFICADO SEGUN
QUALITY ASSURANCE SYSTEM CERTIFIED ACCORDING TO

UNE-EN-ISO 9001

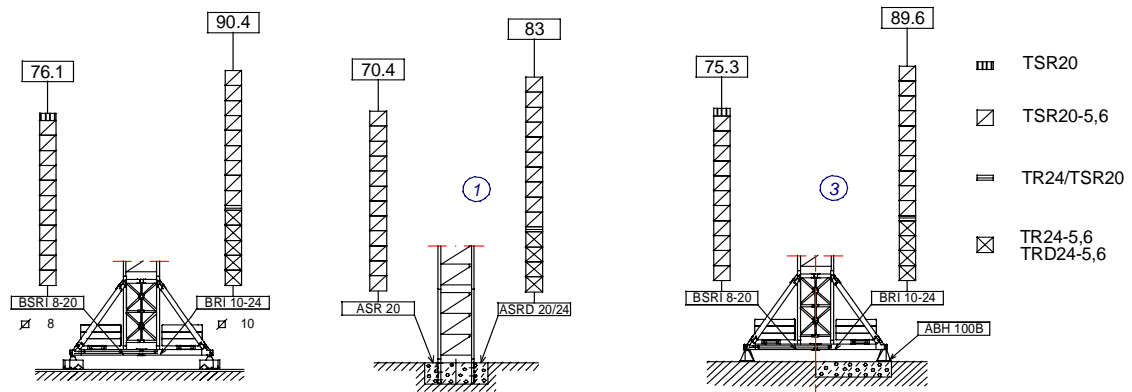


H = Altura máxima bajo gancho sin arriostrar (m)
Maximum height under hook without fastening (m)

PC19-1	163.40.000	BSR18-20	204.20.000
PC19-2	163.41.000	BRI 10-24	156.20.500
PC19-3	163.42.000	ASR20	160.21.200
PC19-4	163.43.000	ASRD 20/24	156.21.000
PT19-5	163.44.000	TSR20	153.31.800
PT19-6	163.45.000	TSR20-5,6	204.31.000
PT19-7	163.46.000	TR24/TSR20	204.36.000
PT19-8	163.47.000	TR24-5,6	156.30.700
PT19-9	163.48.000	TRD24-5,6	156.30.300
PP19	163.48.500	TM20SR	204.35.000
		ABH100B	204.23.000

(H) TRASLACION / TRAVELLING

(H) ESTACIONARIA / STATIONARY



Viento fuera de servicio / Out of service wind: FEM 1001



JASO EQUIPOS DE OBRAS Y CONSTRUCCIONES, S.L.

Fecha / Date: 12-03-2011 - Reservado el derecho a modificaciones sin previo aviso / Subject to modification, without previous warning
Declinamos toda responsabilidad derivada de la información proporcionada / This information is supplied without liability

SR [t]		Cargas máximas / Maximum loads SR - 12												12 t	
PLUMA JIB [m]	Alcance del gancho [m] / Hook reach [m]														a...[m]
	85	80	75	70	65	60	55	50	45	40	35	30	25	20	
85	2,50	2,78	3,11	3,48	3,90	4,40	4,99	5,70	6,56	7,64	9,02	10,87	12,00	12,00	27,6
80	—	3,50	3,87	4,29	4,78	5,36	6,03	6,84	7,83	9,07	10,66	12,00	12,00	12,00	31,7
75	—	—	4,00	4,43	4,93	5,52	6,21	7,03	8,04	9,31	10,93	12,00	12,00	12,00	32,3
70	—	—	—	4,50	5,00	5,59	6,29	7,13	8,15	9,42	11,07	12,00	12,00	12,00	32,7
65	—	—	—	—	5,50	6,13	6,88	7,77	8,86	10,23	11,99	12,00	12,00	12,00	35
60	—	—	—	—	—	6,50	7,28	8,21	9,36	10,78	12,00	12,00	12,00	12,00	36,5
55	—	—	—	—	—	—	8,00	9,01	10,24	11,77	12,00	12,00	12,00	12,00	39,4
50	—	—	—	—	—	—	—	9,50	10,78	12,00	12,00	12,00	12,00	12,00	41,1
45	—	—	—	—	—	—	—	—	11,00	12,00	12,00	12,00	12,00	12,00	41,8
40	—	—	—	—	—	—	—	—	—	12,00	12,00	12,00	12,00	12,00	40,0
35	—	—	—	—	—	—	—	—	—	—	12,00	12,00	12,00	12,00	35,0
30	—	—	—	—	—	—	—	—	—	—	—	12,00	12,00	12,00	30,0

DR [t]		Cargas máximas / Maximum loads DR - 24												24t	
PLUMA JIB [m]	Alcance del gancho [m] / Hook reach [m]														a...[m]
	85	80	75	70	65	60	55	50	45	40	35	30	25	20	
85	2,00	2,29	2,62	2,99	3,42	3,93	4,52	5,24	6,11	7,20	8,60	10,48	13,10	17,03	14,8
80	—	3,00	3,37	3,80	4,30	4,87	5,56	6,37	7,37	8,62	10,23	12,37	15,37	19,87	16,9
75	—	—	3,50	3,94	4,44	5,03	5,73	6,56	7,58	8,86	10,50	12,68	15,75	20,34	17,3
70	—	—	—	4,00	4,51	5,10	5,81	6,65	7,68	8,97	10,62	12,83	15,92	20,56	17,4
65	—	—	—	—	5,00	5,63	6,39	7,29	8,39	9,76	11,53	13,89	17,20	22,15	18,6
60	—	—	—	—	—	6,00	6,78	7,72	8,87	10,31	12,16	14,62	18,07	23,25	19,4
55	—	—	—	—	—	—	7,50	8,51	9,75	11,30	13,28	15,94	19,65	24,00	20,9
50	—	—	—	—	—	—	—	9,00	10,29	11,91	13,98	16,75	20,62	24,00	21,8
45	—	—	—	—	—	—	—	—	10,50	12,14	14,25	17,06	21,00	24,00	22,2
40	—	—	—	—	—	—	—	—	—	12,50	14,66	17,54	21,57	24,00	22,7
35	—	—	—	—	—	—	—	—	—	—	15,00	17,94	22,05	24,00	23,2
30	—	—	—	—	—	—	—	—	—	—	—	18,00	22,12	24,00	23,2

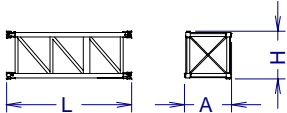
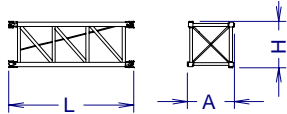
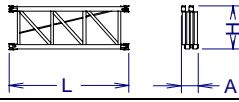
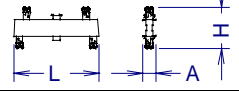
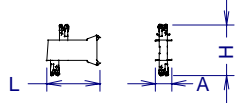
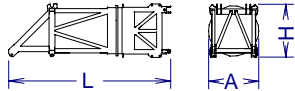
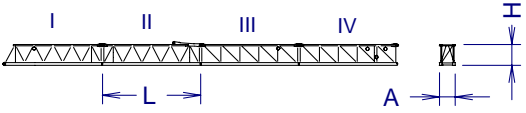
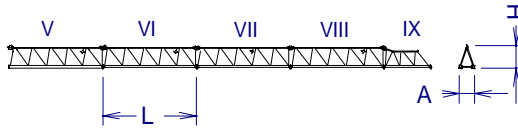
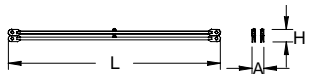
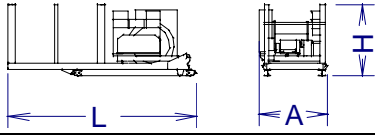
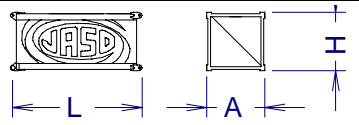
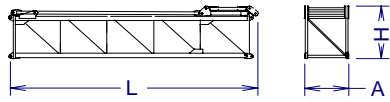
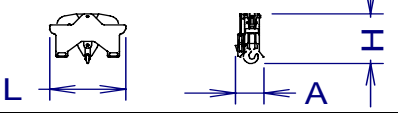
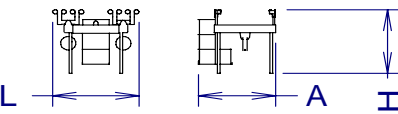
CARACTERISTICAS DE MECANISMOS / MECHANISMS FEATURES

*opcional *optional					
	EC88115VF	*EC150205VF	TG4020VF	OG4006VF	TC15105VF
			0...20 m/min	0...0,2 0,2...0,4 0,4...0,8 r/min sl/min	12 t 0...105 m/min 24 t 0...52 m/min
KW	65	110	4 x 7,5	4 x 7,5	11
Máx. recor. gancho Maximum hook course	SR 828m DR 414m			400V 50Hz	Potencia necesaria con Power required with EC 88115VF = 136 kW EC150205VF = 181 kW

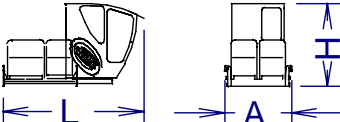
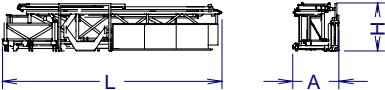
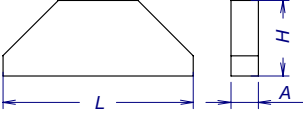
Importante: A medida que la altura bajo gancho aumenta, disminuye la capacidad de carga de la grúa. Para alturas superiores a la autoestable consultar a JASO EQUIPOS DE OBRAS Y CNES, S.L.

Important: When the height under hook increases, the hoisting load will decrease. If the height under hook is higher than the free standing height, consult to JASO EQUIPOS DE OBRAS Y CNES, S.L.

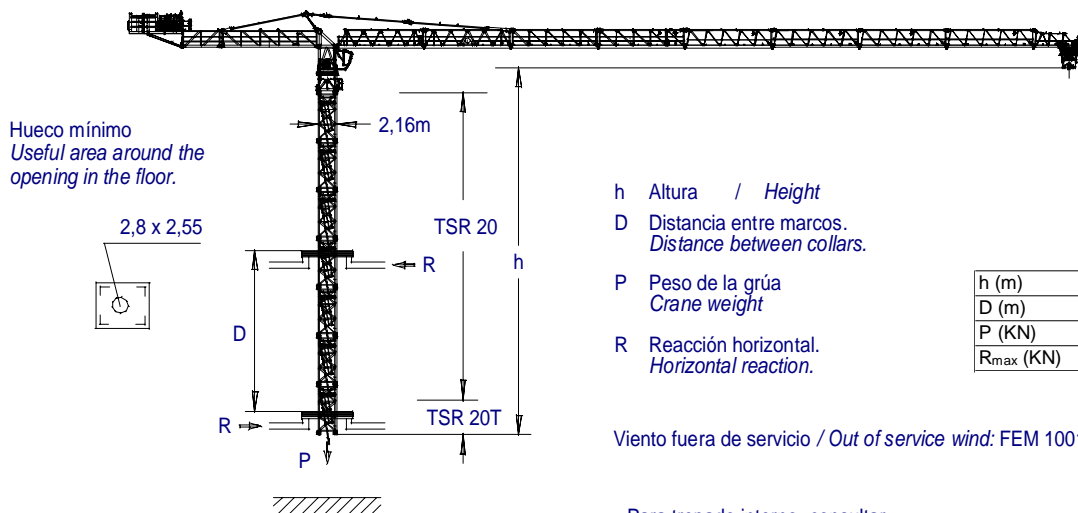


DENOMINACION / DENOMINATION			L [m]	A [m]	H [m]	P / W [kg]
Torre inferior Lower tower	TSRI-20-5,6		5,990	2,257	2,257	6562
Torre Tower	TSR20 TSR20-5,6 TR24-5,6		4,260 5,990 5,990	2,251 2,257 2,760	2,251 2,257 2,835	3110 4262 4625
Torre desmontada Dismantled tower	TRD24-5,6		5,990	1,170	2,545	5220
Larguero largo, reduccion Long crossbar	TR24/TSR20		3,950	0,6	1,814	2267
Larguero corto reduccion Short crossbar	TR24/TSR20		1,915	0,6	1,814	1058
Torre asiento pista, torre superior y orientación Slewing table, top tower and slewing mechanism			7,480	2,315	2,461	15200
Tramo de pluma Jib section	PC19-1 PC19-2+Tr PC19-3 PC19-4		10,270 10,300 10,280 10,280	1,845 1,600 1,600 1,600	2,235 2,400 2,175 2,180	4215 5385 4770 4035
Tramo de pluma Jib section	PT19-5 PT19-6 PT19-7 PT19-8 PT19-9 PP19		10,315 10,300 10,280 10,280 5,184 1,300	1,600 1,600 1,600 1,600 1,600 1,850	2,205 2,205 2,160 2,160 2,163 0,655	2630 2020 1662 1362 790 320
Tirante sostén pluma Jib support tie			9,415	1,11	0,685	3225
Contrapluma III con mecanismos (sin cable) y plumin Counterjib III with mechanism (without rope), and auxiliary jib			6,395	2,300	2,456	10300
Contrapluma II Counterjib II			4,550	2,034	2,064	2135
Contrapluma I Counterjib I			11,420	2,034	2,505	8762
Polipasto Hook assembly	SR/DR		1,750	0,650	1,340	1040
Carro Crab	SR/DR		2,580	2,305	2,135	1155



DENOMINACION / DENOMINATION		L [m]	A [m]	H [m]	P / W [kg]
Plataforma y cabina (2 x 1,5) Platform and cabin (2 x 1,5)		4,000	1,905	2,335	1257
Transporte torre de montaje Jacking cage transport	TM20SR 	10,820	2,285	2,395	11725
Contrapeso Counterweight	Lastre Ballast 	3,800 3,800 3,800	0,580 0,275 0,180	1,500 1,500 1,500	6000 3000 2000

LASTRES INFERIORES / LOWER BALLASTS		Para alturas intermedias tomar el lastre correspondiente a la altura superior For intermediate heights take the ballast corresponding to the higher height		
Viento fuera de servicio / Out of service wind: FEM 1001				
BRI 10-24 Altura bajo gancho (m) / Height under hook (m)		79.2	84.8	90.4
Número de piedras a colocar Number of ballast blocks to put	Piedras de 6000 kg Blocks of 6000 kg	8	12	16
BSRI 8-20 Altura bajo gancho (m) / Height under hook (m)		61	70.5	76.1
Número de piedras a colocar Number of ballast blocks to put	Piedras de 6000 kg Blocks of 6000 kg	8	12	18



- h Altura / Height
- D Distancia entre marcos.
Distance between collars.
- P Peso de la grúa
Crane weight
- R Reacción horizontal.
Horizontal reaction.

	En servicio / In service	Fuera de servicio / Out of service
h (m)	42,1	
D (m)	14,3 - 20	
P (KN)	1758	1517
R _{max} (KN)	247	398

Viento fuera de servicio / Out of service wind: FEM 1001

Para trepado interno, consultar.
For internal climbing, consult.



JASO EQUIPOS DE OBRAS Y CONSTRUCCIONES, S.L.

Ctra./Rd. Madrid - Irún Km. 415
20.213 IDIAZABAL [Gipuzkoa]
ESPAÑA / SPAIN
P.O. Box, 23 - 20.200 BEASAIN

Tel. +34 943 - 18 70 00
Fax. +34 943 - 18 70 20
E-mail: jaso@jaso.com
http://www.jaso.com

Fecha / Date: 12-03-2011

DELEGACION / DELEGATION